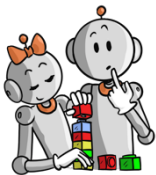


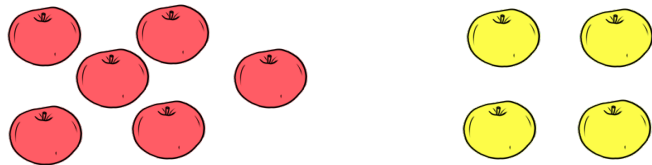
Comparer des nombres



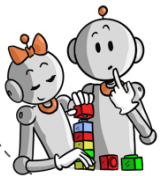
$$4 < 6$$



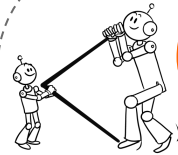
- On dit 4 est plus petit que 6.
- On utilise le signe $<$



$$6 > 4$$



- On dit 6 est plus grand que 4.
- On utilise le signe $>$



Comparer des nombres

Place ton signe entre les deux nombres.

9 3 7 3

2 6 3 8

6 5 8 9

7 10 15 12

10 4 17 19

