

Prénom : _____

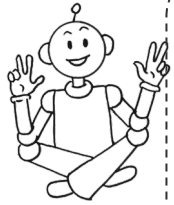
Date: / /

Evaluation : Calcul CE1

Maths



1. Les doubles. Calcule.



$4 + 4 = \underline{\quad}$

$10 + 10 = \underline{\quad}$

$9 + 9 = \underline{\quad}$

$6 + 6 = \underline{\quad}$

$3 + 3 = \underline{\quad}$

$20 + 20 = \underline{\quad}$

$8 + 8 = \underline{\quad}$

$7 + 7 = \underline{\quad}$

$24 + 24 = \underline{\quad}$

2. Effectuer des soustractions de dizaines entières. Calcule.

$20 - 10 = \underline{\quad}$

$60 - 20 = \underline{\quad}$

$60 - 40 = \underline{\quad}$

$30 - 10 = \underline{\quad}$

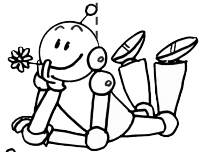
$50 - 30 = \underline{\quad}$

$30 - 30 = \underline{\quad}$

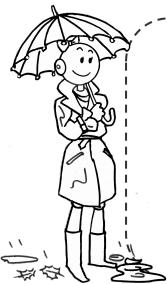
$50 - 20 = \underline{\quad}$

$70 - 40 = \underline{\quad}$

$80 - 50 = \underline{\quad}$



3. Effectuer des soustractions en ligne.



$35 - 10 = \underline{\quad}$

$28 - 20 = \underline{\quad}$

$75 - 30 = \underline{\quad}$

$42 - 30 = \underline{\quad}$

$45 - 10 = \underline{\quad}$

$57 - 30 = \underline{\quad}$

$67 - 20 = \underline{\quad}$

$39 - 20 = \underline{\quad}$

$92 - 50 = \underline{\quad}$

4. Effectuer des soustractions en ligne.

$85 - 5 = \underline{\quad}$

$85 - 50 = \underline{\quad}$

$92 - 2 = \underline{\quad}$

$62 - 2 = \underline{\quad}$

$63 - 3 = \underline{\quad}$

$82 - 60 = \underline{\quad}$

$68 - 20 = \underline{\quad}$

$57 - 20 = \underline{\quad}$

$73 - 3 = \underline{\quad}$



Prénom : _____

Date: / /

Evaluation : Calcul CE1

Maths



5. Effectuer des additions en ligne. Calcule.

$50 + 4 = \underline{\quad}$

$20 + 10 = \underline{\quad}$

$6 + 50 = \underline{\quad}$

$70 + 6 = \underline{\quad}$

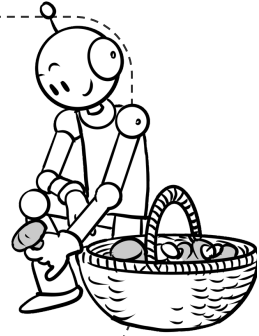
$32 + 20 = \underline{\quad}$

$48 + 20 = \underline{\quad}$

$9 + 40 = \underline{\quad}$

$45 + 30 = \underline{\quad}$

$4 + 45 = \underline{\quad}$



6. Effectuer des additions en ligne. Calcule.

$36 + 13 = \underline{\quad}$

$18 + 61 = \underline{\quad}$

$72 + 26 = \underline{\quad}$

$25 + 42 = \underline{\quad}$

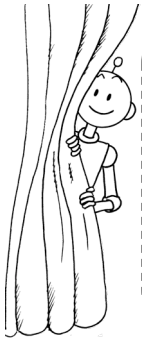
$15 + 20 = \underline{\quad}$

$31 + 8 = \underline{\quad}$

$53 + 24 = \underline{\quad}$

$4 + 44 = \underline{\quad}$

$34 + 24 = \underline{\quad}$



7. Les moitiés. Écris la moitié de chacun de ces nombres.

La moitié de 10, c'est

La moitié de 40, c'est

La moitié de 8, c'est

La moitié de 60, c'est

La moitié de 4, c'est

La moitié de 20, c'est

